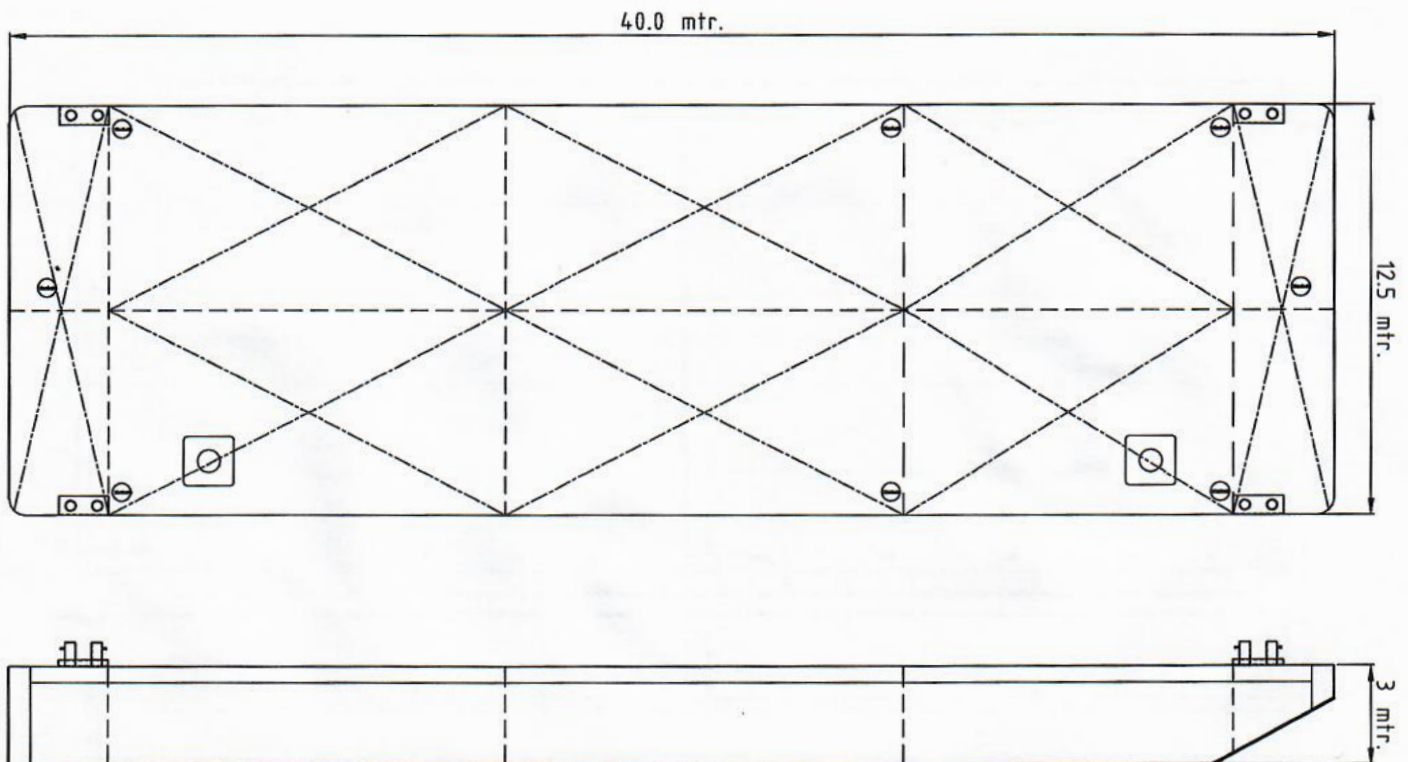


OSPREY 4012 SPECIFICATION

| | |
|------------------------|-------------------------|
| Type of vessel | Flat-top Pontoon |
| Class | Bureau Veritas |
| Trading area | Unrestricted Navigation |
| Main dimensions | 40.00 x 12.50 x 3.00 |
| Cargo capacity | 850 ton |
| Freeboard min. | 0.60m |
| Draught max. | 2.40m |
| GT/NT | 412/151 |
| Deck load max | 10 ton/m ² |
| Spuds | 2x 610mm diameter |



Details believed to be correct but not guaranteed