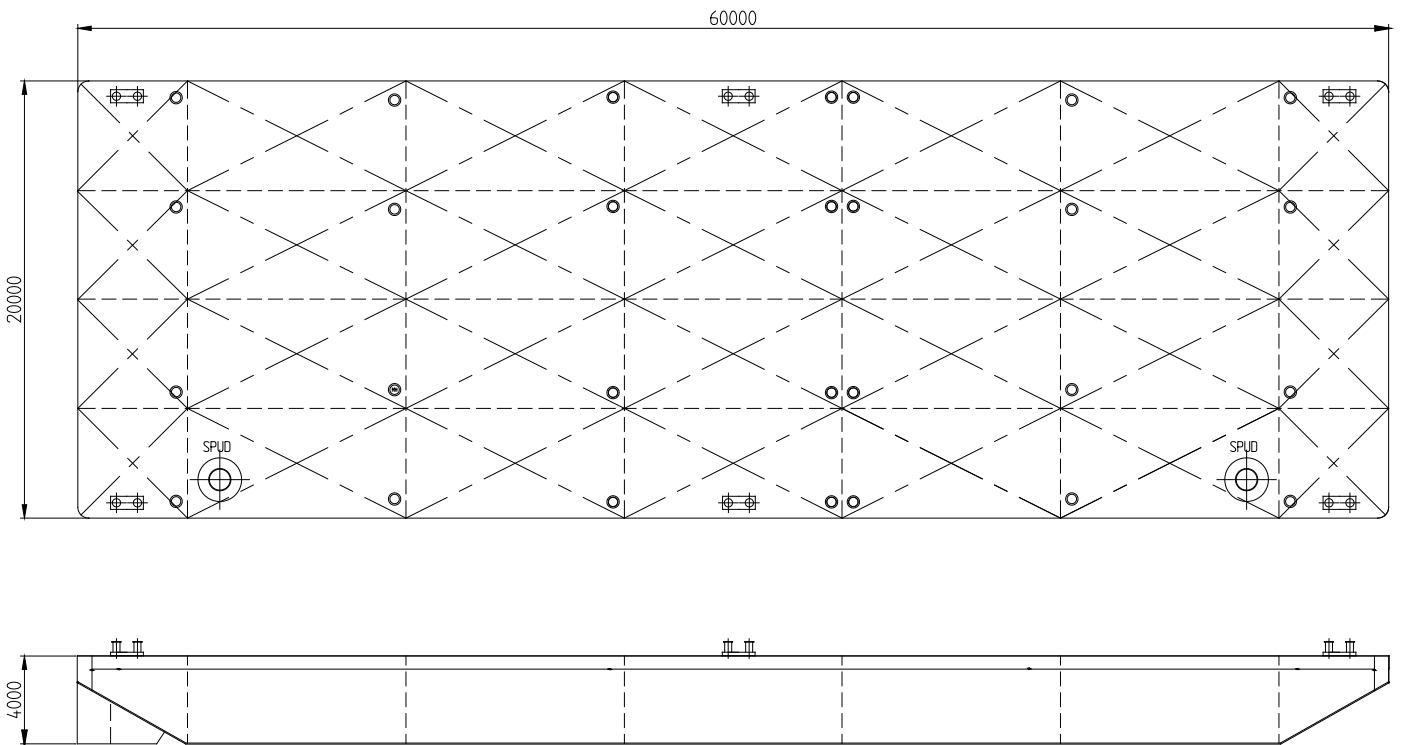


OSPREY CONSTRUCTOR SPECIFICATION

Type of vessel	Flat-top Pontoon
Class	ABS
Trading area	Unrestricted Navigation
Main dimensions	60.00 x 22.00 x 4.00
Cargo capacity	3262 ton
Freeboard min.	0.79m
Draught max.	3.2m
Draught empty	0.54m
GT/NT	1381/414
Deck load max	20 ton/m ²
Spuds	Suitable for 2 spuds ø914 mm



Details believed to be correct but not guaranteed