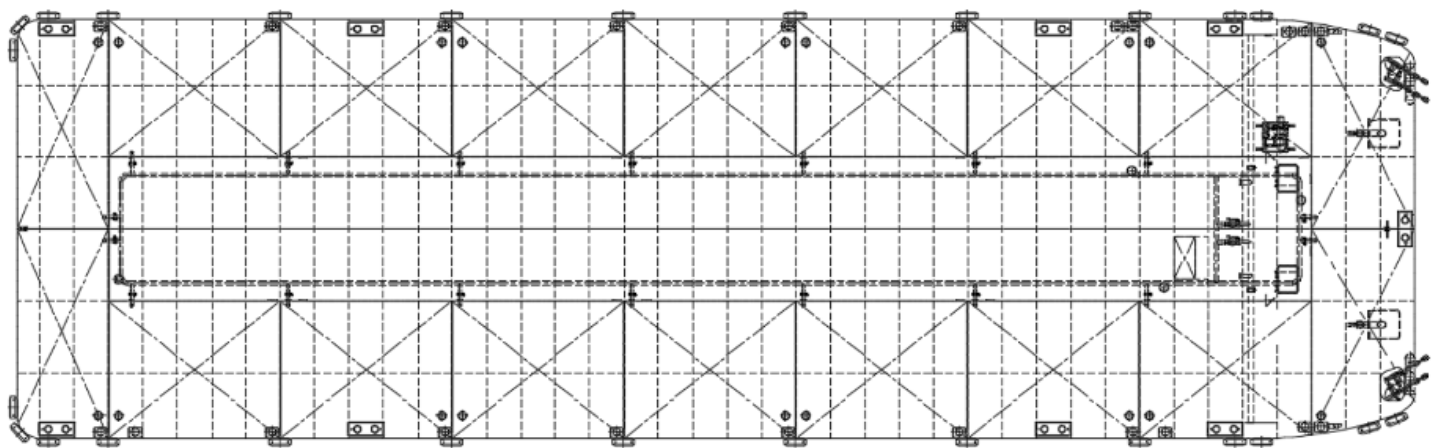
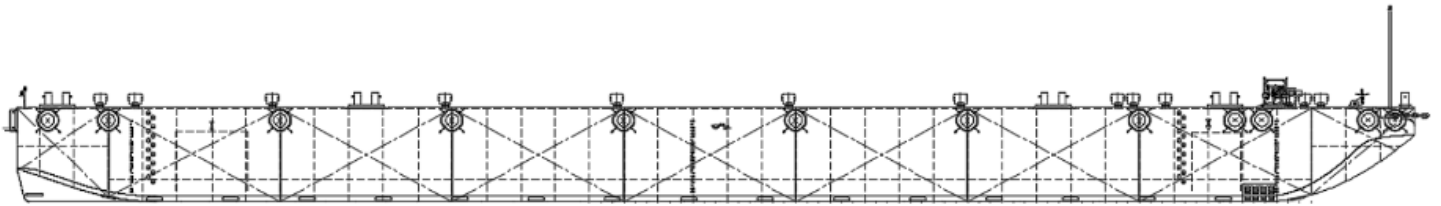


## OSPREY INTREPID SPECIFICATION

<b>Type of vessel</b>	Flat-top barges with internal ballast system
<b>Class</b>	ABS
<b>Trading area</b>	Unrestricted Navigation
<b>Main dimensions</b>	91.50 x 27.40 x 6.10
<b>Cargo capacity</b>	9906 ton
<b>Freeboard min.</b>	1.20 m
<b>Draught max.</b>	4.90 m
<b>GT/NT</b>	4146/1248
<b>Deck load max</b>	20 ton/m <sup>2</sup>



Details believed to be correct but not guaranteed