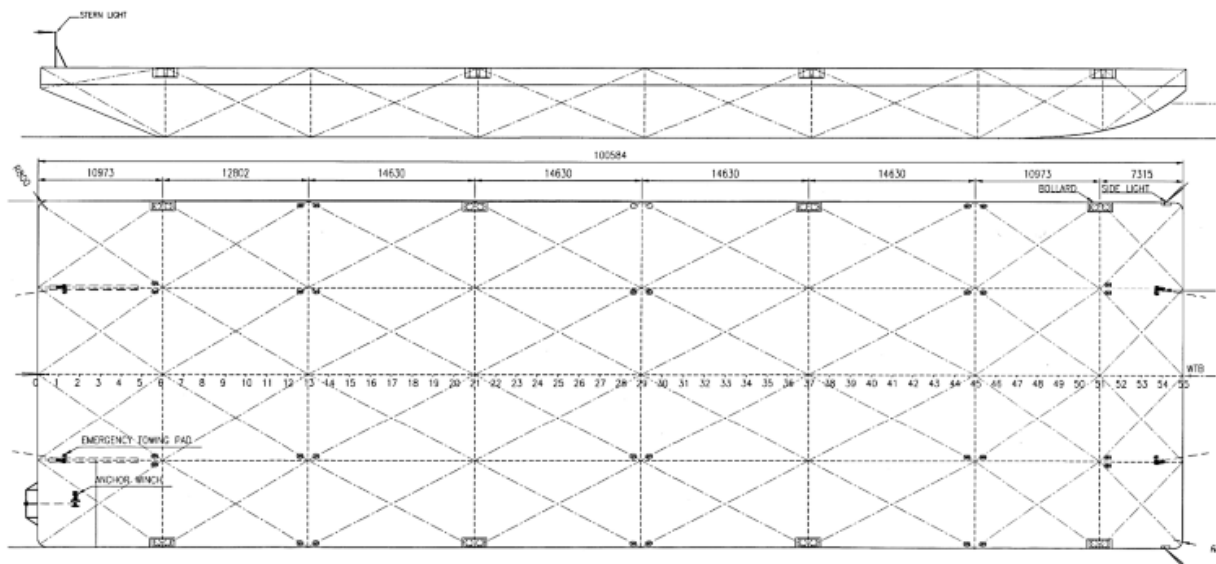


Osprey 10030

TECHNICAL DETAILS

Type of vessel	Flat-top Pontoon	Freeboard min.	1.37m
Class	Lloyds	Draught max.	4.73m
Trading area	Unrestricted Navigation	GT/NT	4969/1490
Main dimensions	100.58 x 30.48 x 6.10	Deck load max	15 ton/m ²
Cargo capacity	12906 ton		



Details believed to be correct but not guaranteed

Osprey, 9 Portis Fields, Bristol Road,
Portishead, Bristol, BS20 6PN

hello@osprey.group | +44 (0)1912 503 757

www.osprey-group

Osprey Group

@ospreytweets

@osprey_group

@ospreygroup

@ospreygroup

Osprey Group