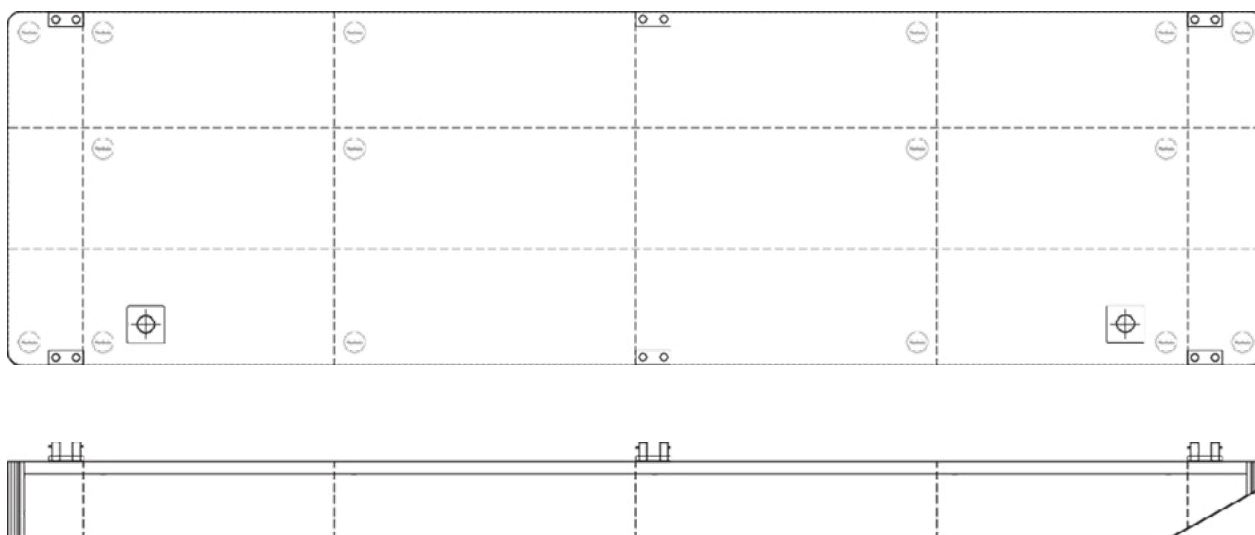


Osprey 5014A

TECHNICAL DETAILS

Type of vessel	Flat-top Pontoon	Freeboard min.	0.68m
Class	Bureau Veritas	Draught max.	2.32m
Trading area	Unrestricted Navigation	GT/NT	544/163
Main dimensions	50.00 x 14.00 x 3.00	Deck load max	10 ton/m ²
Cargo capacity	1300 ton	Spuds	Suitable for 2x 610mm diameter



Details believed to be correct but not guaranteed

Osprey, 9 Portis Fields, Bristol Road,
Portishead, Bristol, BS20 6PN

hello@osprey.group | +44 (0)1912 503 757

www.osprey-group

[in](#) Osprey Group
[t](#) @ospreytweets
[i](#) @osprey_group

[f](#) @ospreygroup
[v](#) @ospreygroup
[y](#) Osprey Group