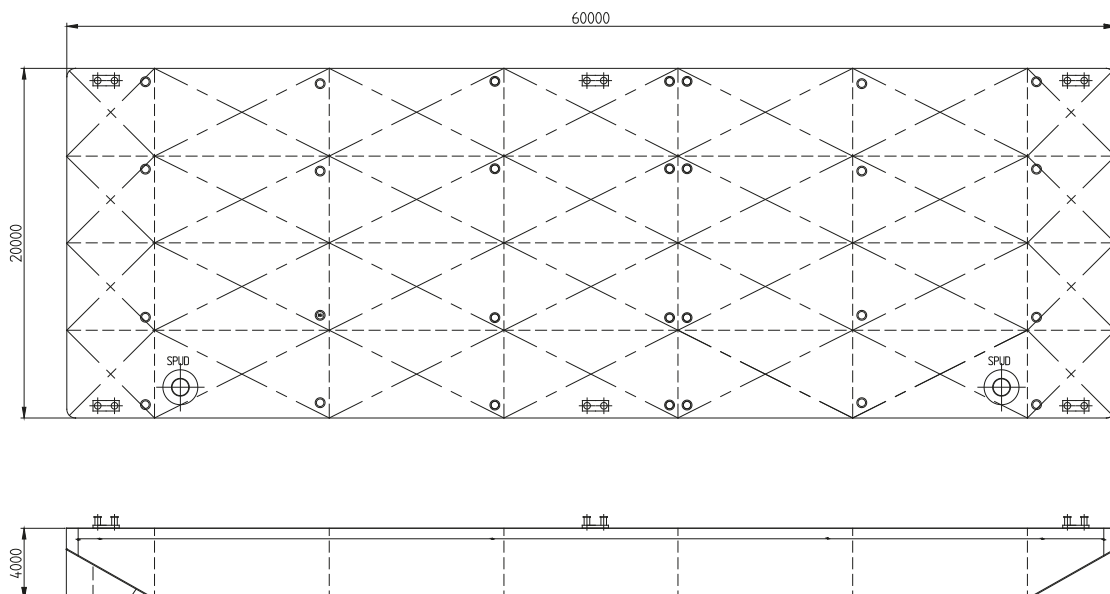


# Osprey 6022

### TECHNICAL DETAILS

Type of vessel	Flat-top Pontoon	Freeboard min.	0.79m
Class	Bureau Veritas	Draught max.	3.2m
Trading area	Unrestricted Navigation	Draught empty	0.54m
Main dimensions	60.00 x 22.00 x 4.00	GT/NT	1381/414
Cargo capacity	3262 ton	Deck load max	20 ton/m <sup>2</sup>
		Spuds	Suitable for 2 spuds ø914 mm



Details believed to be correct but not guaranteed

**Osprey**, 9 Portis Fields, Bristol Road,  
Portishead, Bristol, BS20 6PN

hello@osprey.group | +44 (0)1912 503 757

[www.osprey-group](http://www.osprey-group)

[in](#) Osprey Group  
[t](#) @ospreytweets  
[@](#) @osprey\_group

[f](#) @ospreygroup  
[v](#) @ospreygroup  
[y](#) Osprey Group