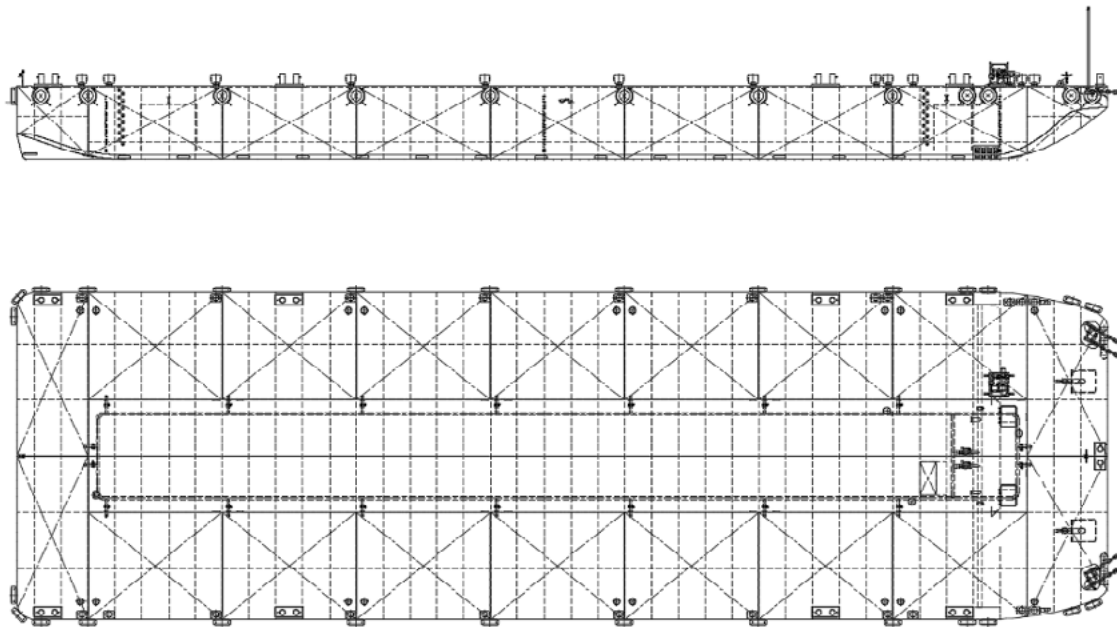


# Osprey Intrepid

## TECHNICAL DETAILS

Type of vessel	Flat-top Barge with internal ballast system	Freeboard min.	1.20m
Class	ABS	Draught max.	4.90m
Trading area	Unrestricted Navigation	GT/NT	4146/1248
Main dimensions	91.50 x 27.40 x 6.10	Deck load max	20 ton/m <sup>2</sup>
Cargo capacity	9906 ton		






Details believed to be correct but not guaranteed

**Osprey**, 9 Portis Fields, Bristol Road,  
Portishead, Bristol, BS20 6PN

hello@osprey.group | +44 (0)1912 503 757

[www.osprey-group](http://www.osprey-group)

 Osprey Group  
 @ospreytweets  
 @osprey\_group

 @ospreygroup  
 @ospreygroup  
 Osprey Group