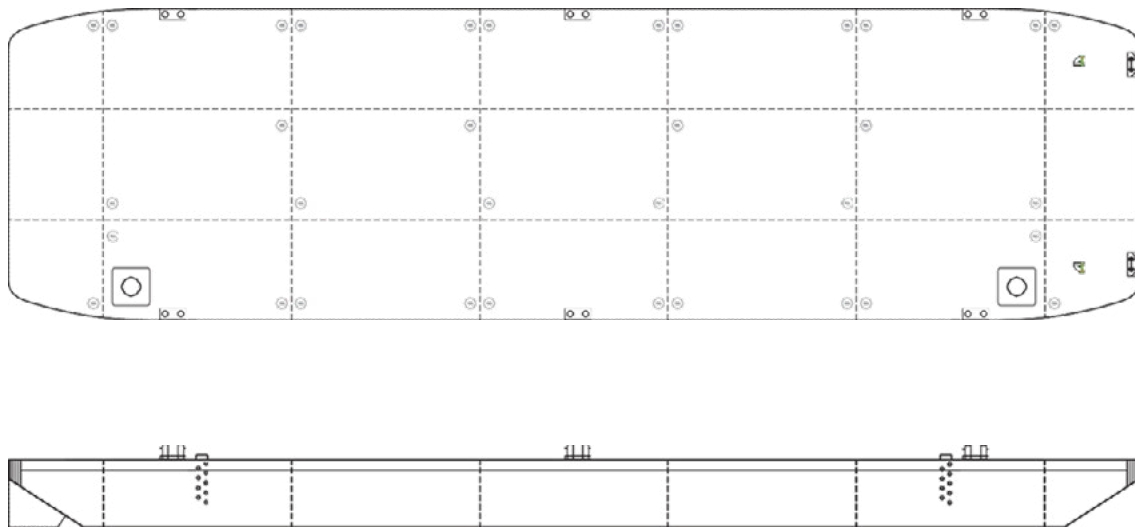


Osprey 6017B

TECHNICAL DETAILS

Type of vessel	Flat-top Pontoon	Freeboard min.	0.78m
Class	Bureau Veritas	Draught max.	2.72m
Trading area	Unrestricted Navigation	GT/NT	891/267
Main dimensions	60.00 x 16.50 x 3.50	Deck load max	12 ton/m ²
Cargo capacity	2140 ton	Spuds	Suitable for 2x 915mm diameter






Details believed to be correct but not guaranteed

Osprey, 9 Portis Fields, Bristol Road,
Portishead, Bristol, BS20 6PN

hello@osprey.group | +44 (0)1912 503 757

www.osprey-group

 Osprey Group
 @ospreytweets
 @osprey_group

 @ospreygroup
 @ospreygroup
 Osprey Group