

Cargo Pontoon 100x33

TECHNICAL DETAILS

Type of vessel	Flat-top Cargo Pontoon	Gross tonnage	6745
Class	Bureau Veritas Hull. Mach pontoon no propulsion	Deadweight	16031 T
Trading area	Unrestricted Navigation	Overall deck strength	15 t/m ²
Port of registration	Vlissingen	Available deck space	3000m ²
Main dimensions	100.00 x 33.00 x7.60	Ballast capacity	1x1200m ³ /h



Details believed to be correct but not guaranteed

Osprey, 9 Portis Fields, Bristol Road,
Portishead, Bristol, BS20 6PN

hello@osprey.group | +44 (0)1912 503 757

www.osprey.group

[/ospreygroup](https://www.linkedin.com/company/ospreygroup)

[@ospreytweets](https://twitter.com/ospreytweets)

[@osprey_group](https://www.instagram.com/osprey_group)

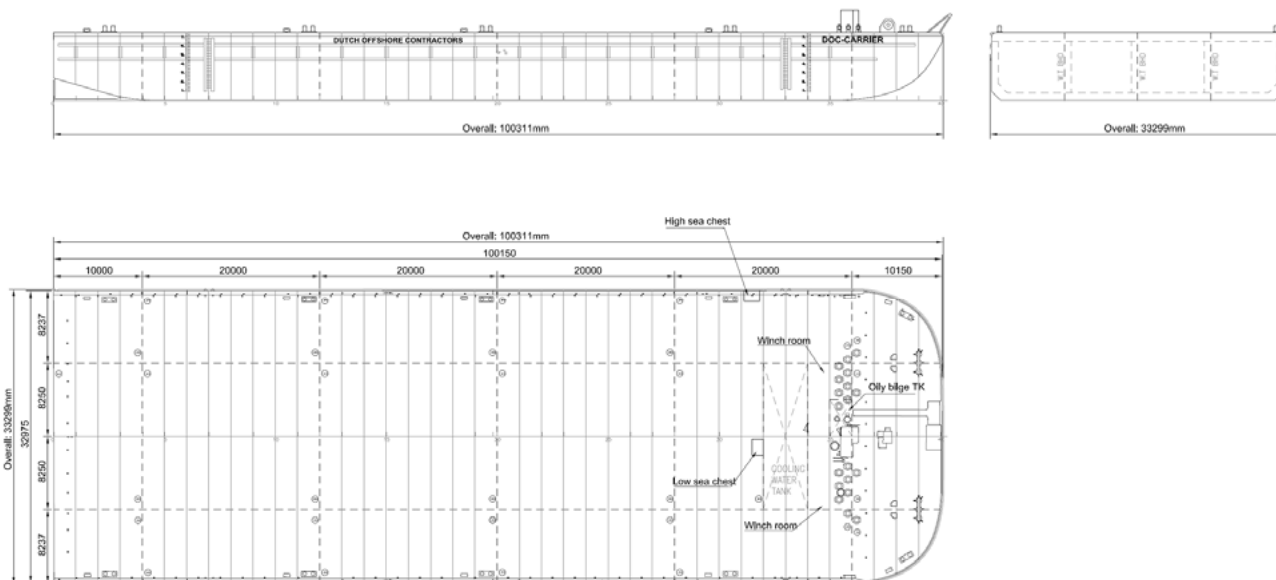
[@ospreygroup](https://www.facebook.com/ospreygroup)

[@ospreygroup](https://www.youtube.com/ospreygroup)

[Osprey Group](https://www.youtube.com/OspreyGroup)

TECHNICAL DETAILS (CONTINUED)

Built	China 2011	Waterballast tanks	20000m ³
Length O A.	100.00m	Fuel oil tank	12.05m ³
Breadth MLD.	33.05m	Oily water tank	10.00m ³
Depth MLD.	7.60m	Frame spacing	2500mm
Summerdraft	6.098m	Tank layout	3 longitudinal bulkheads 5 transverse bulkheads
Lightship weight	2913t	Anchor winch + Anchor Delta Flipper	5 ton



Details believed to be correct but not guaranteed

Osprey, 9 Portis Fields, Bristol Road,
Portishead, Bristol, BS20 6PN

hello@osprey.group | +44 (0)1912 503 757

www.osprey-group

/ospreygroup

@ospreytweets

@osprey_group

@ospreygroup

@ospreygroup

Osprey Group