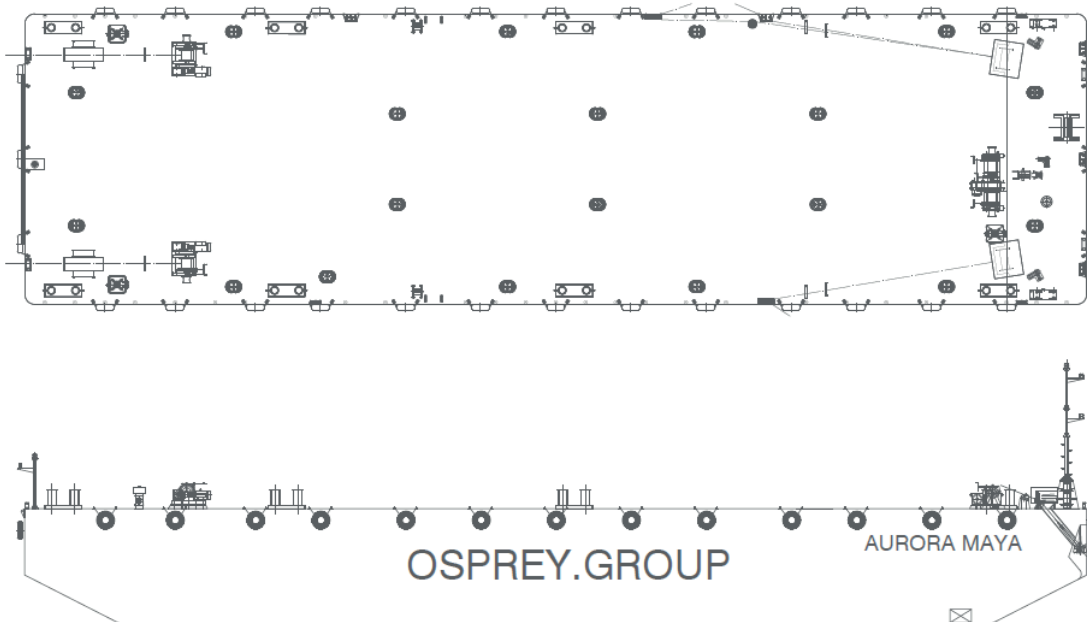


Aurora Maya

TECHNICAL DETAILS

Type of vessel	Flat Top Ballastable Barge	Draught max.	4.88m
Class	ABS	GT/NT	1168 / 350 tons
Trading area	Unrestricted Service	Deck load max	15 ton/m ²
Main dimensions	53.00 x 14.50 x 5.80	Spuds	N/A
Cargo capacity	1554 tons	Electric Winches (Aft)	2 x 80kN
Freeboard min.	0.92m	Hydraulic Winches (Fwd)	2 x 20Te



Details believed to be correct but not guaranteed

Osprey, 9 Portis Fields, Bristol Road,
Portishead, Bristol, BS20 6PN

tom.bryant@osprey.group | +44 (0)1275 460 608

www.osprey-group

[/ospreygroup](https://www.linkedin.com/company/osprey-group)

[@ospreygroup](https://www.facebook.com/ospreygroup)

[@ospreytweets](https://twitter.com/ospreytweets)

[@osprey_group](https://www.instagram.com/osprey_group)

[/ospreygroupvideos](https://www.youtube.com/channel/UCospreygroupvideos)

[@ospreygroup](https://www.youtube.com/channel/UCospreygroup)